

## COMPANY PROFILE



**Dr. Kathrin Kreyenberg**  
*Managing Director & Country Manager*  
 Kathrin.Kreyenberg@psi-cro.com



**Michael Sommer**  
*Senior Director, Business Development*  
 Michael.Sommer@psi-cro.com

## History and Mission

**PSI CRO** is a privately-owned, full-service clinical research organization (CRO) operating globally. PSI's global reach supports clinical trials across multiple countries and continents and specializes in the planning and execution of global pivotal registration clinical trials. PSI CRO Deutschland GmbH was founded in 2008 and has organically grown to approx. 150 associates mainly located in Planegg close to Munich, Bavaria and also strategically placed across Germany. We are responsible for CRO services in Germany as well as in Switzerland.

## Highlights

We have grown organically ever since 1995 and now operate with over 3,000 staff from 41 offices and 60 countries around the world. The company belongs to its original four founders who actively work in PSI Operations and Finance in Zug, Switzerland.

- PSI has received CRO Leadership Awards in multiple categories each year since 2018.
- PSI works with smaller and mid-size biotech companies as well as selected large pharma; maintaining focus and nimbleness combined with global study execution.
- PSI has been focusing mainly on global phase II and phase III clinical trials in our core therapeutic areas. Our work led to 20 FDA/EMA approvals in the past five years. As of the End of 2024 we've run 14 global trials with GMOs (genetically modified organism) including the largest ever study of a hemophilia gene therapy.
- PSI works across the entire development program, delivering multiple studies; we understand the importance of flexibility and developing a reliable and transparent relationship with our clients. This allows us to bring in cost and time savings, as we learn how each individual client prefers to work.

## PSI CRO Deutschland GmbH

Behringstrasse 7  
 82152 Planegg, Germany

Tel. +49 89 899 960 80  
 Fax +49 89 899 960 851

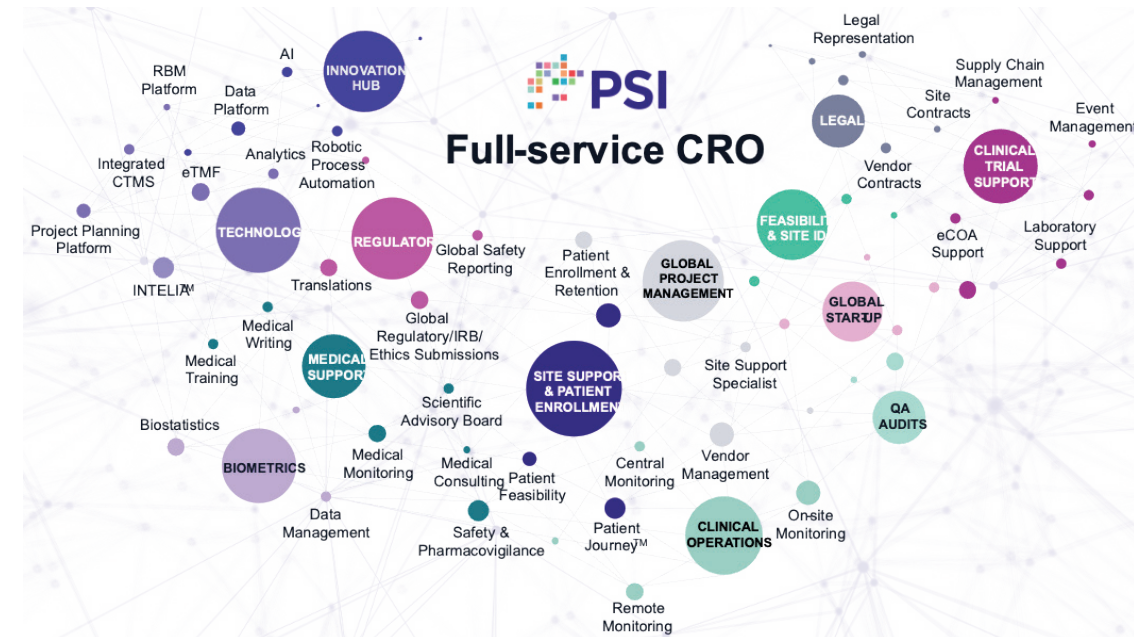
E-Mail: [Info\\_Germany@psi-cro.com](mailto:Info_Germany@psi-cro.com)

BVMA Member since 2024  
 Audit passed in 2024



<https://psi-cro.com>

## Services



[www.bvma.de](http://www.bvma.de)

[www.bvma.de](http://www.bvma.de)

