

COMPANY PROFILE



Manuel Neukum
Managing Director
manuel.neukum@marvin.now



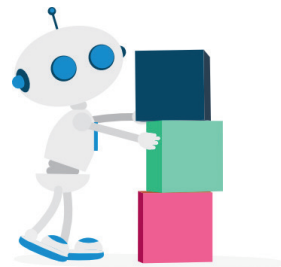
David Renzelmann
Executive Director BD
david.renzelmann@marvin.now

History and Mission

AB Cube Germany GmbH (formerly XClinical, part of EvidentIQ Group) was founded in Munich in 2002 to develop a CDISC-compliant EDC System called Marvin. Marvin is a modern electronic data capture (EDC) platform designed for clinical research. We support study sponsors, contract research organizations (CROs), and academic institutions with flexible, user-friendly solutions that enable efficient, compliant, and high-quality clinical data management. Our platform streamlines study setup, data collection, and monitoring, helping research teams generate faster insights and achieve better outcomes across clinical trials.

Highlights

- Marvin EDC is a unified eClinical platform combining EDC, IWRS, Coding, ePRO and more - engineered for adaptive trial designs, RCTs and global studies.
- Built for flexibility, Marvin accelerates startup, allows for mid-study flexibility, and ensures regulatory compliance throughout.
- Marvin provides an easy-to-use interface to enter and access data, including multi-language support.
- As of today, more than 1,500 studies worldwide have been managed using Marvin EDC – made in Germany




marvin

AB Cube Germany GmbH

Rosental 5
80331 Munich, Germany

Tel. +49 89-4522775-000
E-Mail: info@marvin.now

BVMA Member since 2025
Audit passed in 2025



AB-Cube
Germany



www.marvin.now

Services

Supporting services

With our web-based “Software-as-a-Service” model you may use our software as required. This model ensures high availability. We offer solutions in the private as well as in the public cloud. Cloud services are hosted in the respective continent according to the customer requirements.

- Hardware Provisioning
- Software Installation
- Vulnerability Management
- System Monitoring (off-site)
- Backups, Recovery, Security

No Upfront Investment Costs

For all our products, you can reach us for service requests via our Hotline, via e-mail or via our Support Portal. We support all of your product related questions, no matter if you are a ‘full service’ or an experienced ‘do-it-yourself’ customer.

We offer personal and dedicated Customer Success Specialists.

We believe in partnership

We bring over 20 years of experience with EDC software. Our employees are experts in clinical research, project management, software development, data privacy and data security.

Expert Support: Receive quick, high-quality responses from experts in medical and academic research who understand your specific context.

Data Security/Compliance: Validated software meeting regulatory requirements and adherence (FDA, EMA, PMDA).

Cost Efficiency: Reduces operational costs while maintaining high functionality and security.

Seamless Integration: Compatible with existing research and data management tools.